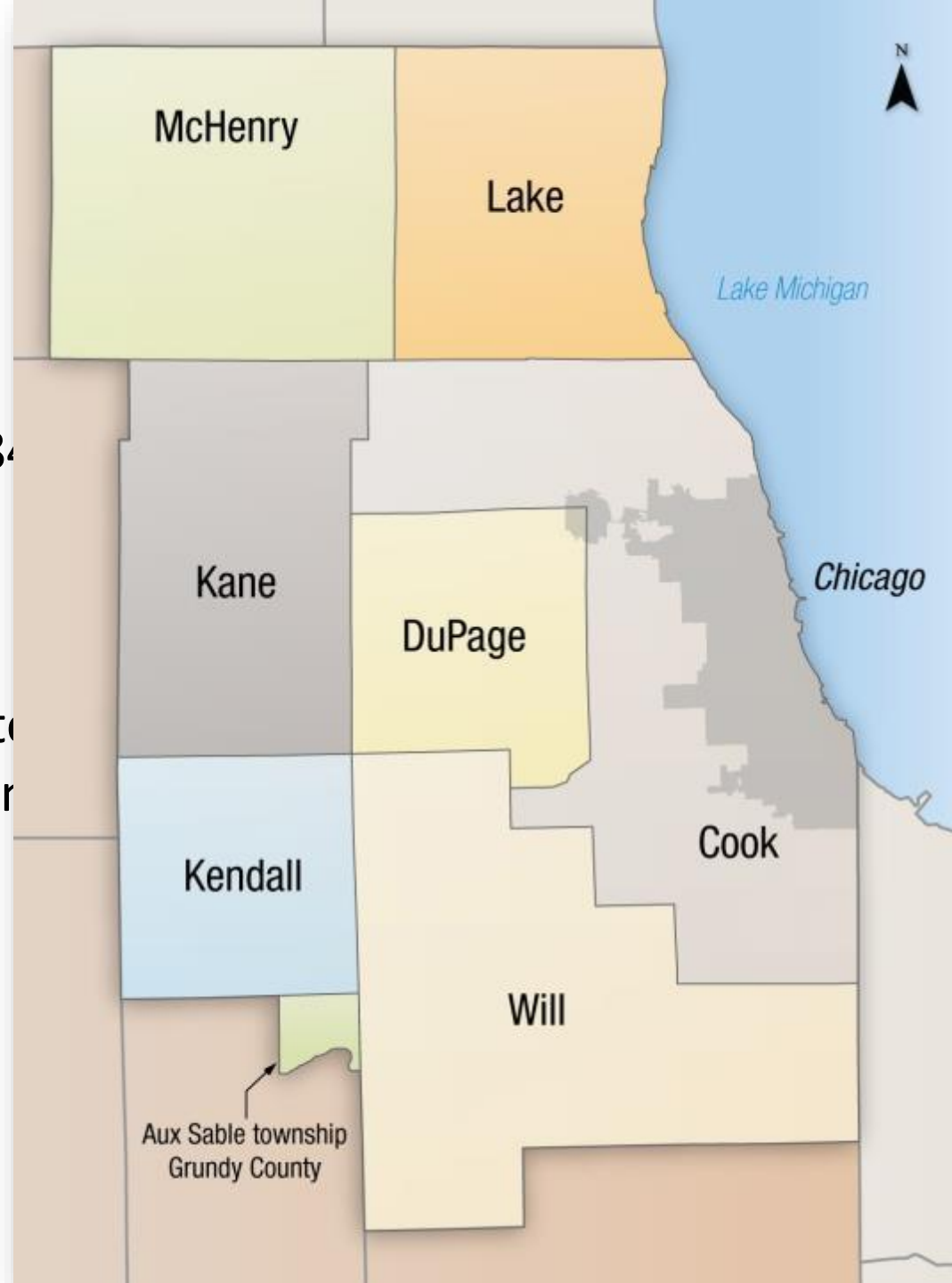


# About CMAP

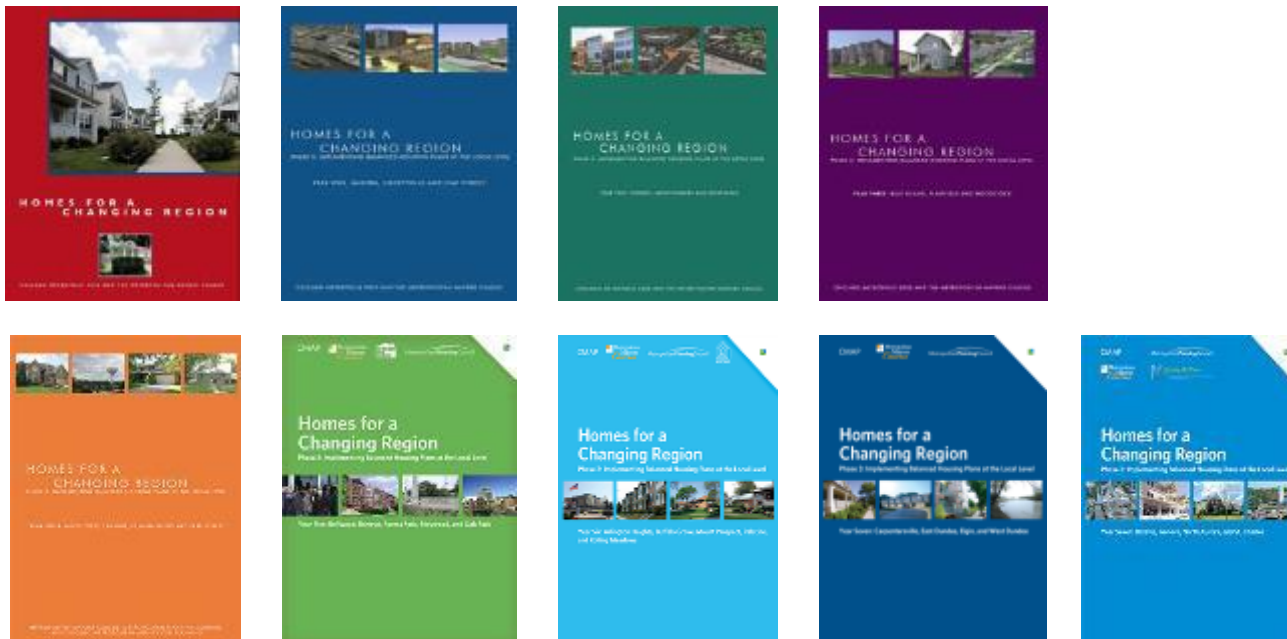
- Regional planning agency covering 7 counties and 28 municipalities of northeastern Illinois
- Formed in 2005 to integrate land use and transportation planning





# Project Background

A model proven over the past decade  
Partnership of CMAP, MMC, and MPC  
By end of year 2016, tested by 43 communities





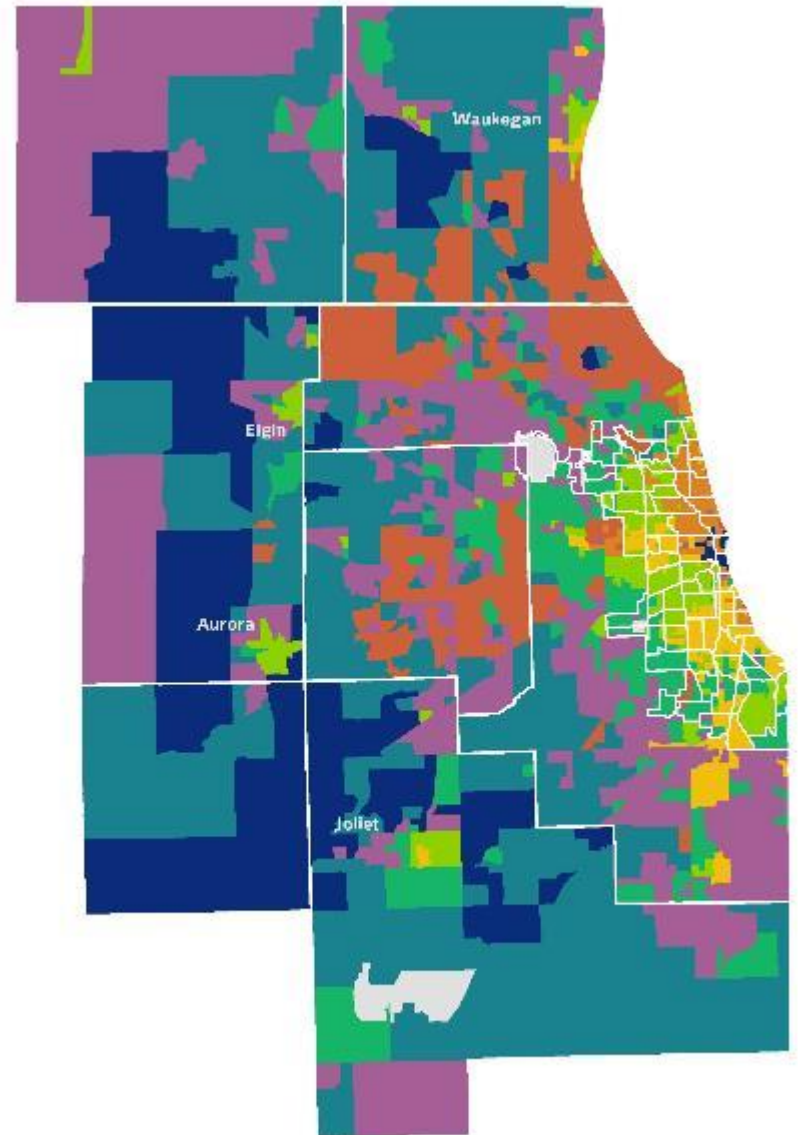
# Using the submarkets

IHS developed submarkets serve as the starting point

Supplemented with other resources to uncover:

- Most pressing issues
- Possible strategies
- Successful strategies

Interviews

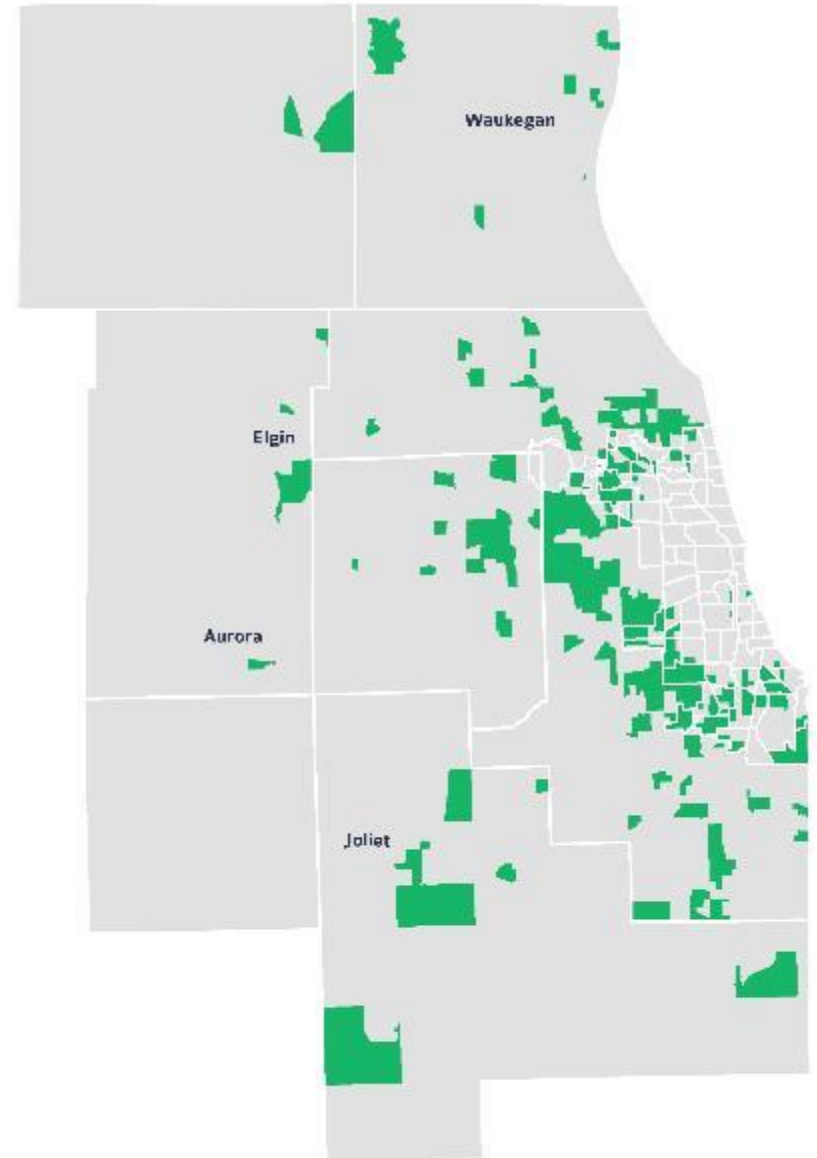




# Example results: submarket 4

## Issues/opportunities

- “Setting the table” for development
- Attractive form
- Modernizing existing housing stock

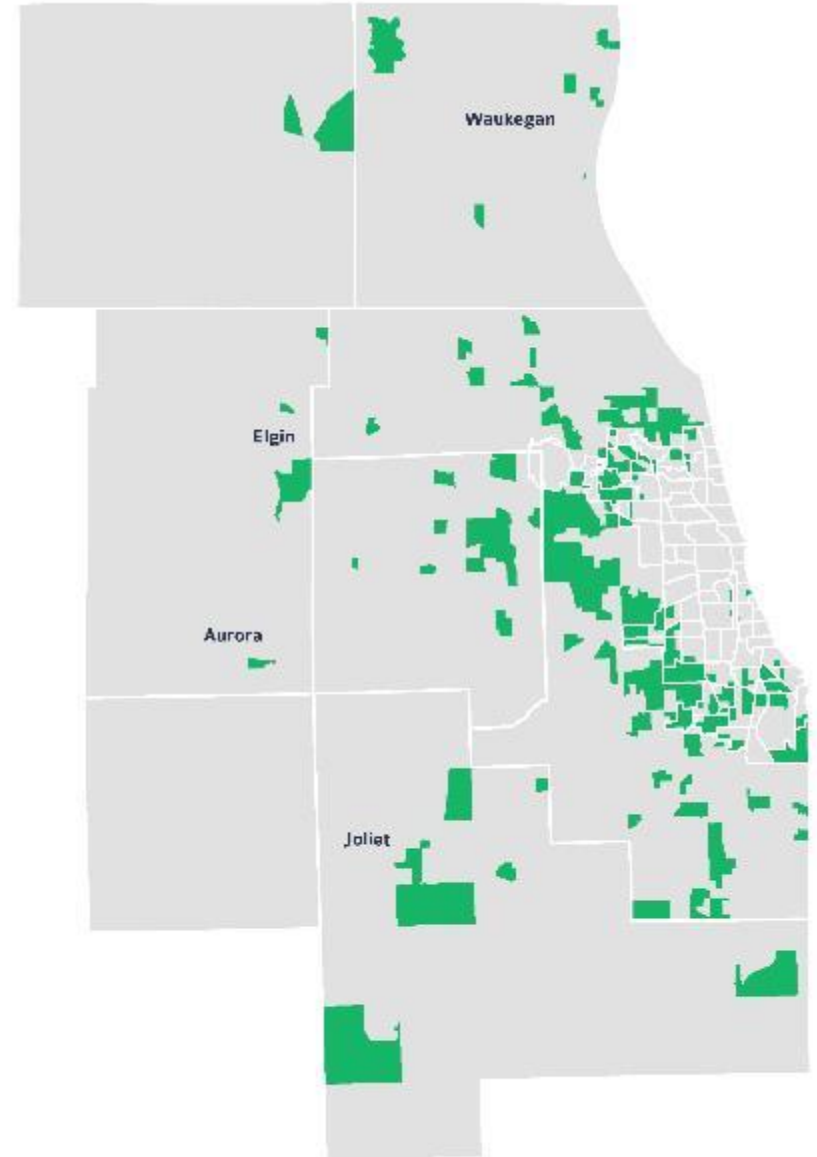




# Example results: submarket 4

## Strategies


- Targeted marketing program
- Managing distressed properties





# Strategy case studies

<http://cmap.is/homegrown2>



**Home Grown**  
LOCAL HOUSING STRATEGIES IN ACTION

These case studies are part of the **Homes for a Changing Region Toolkit**, a guide for municipalities to create comprehensive housing plans. Each case study covers a housing policy, development, program, or financing strategy; how it works; why it was successful; and how it was funded. Case studies address a range of community housing issues, from affordability to accessibility and from property management to demolition.

Category	Number of Case Studies
Policy and governance	20 case studies
Housing development	15 case studies
Housing program	17 case studies
Finance	15 case studies

CMAP



Metropolitan **Planning** Council



OCTOBER

NOVEMBER

DECEMBER

JANUARY

OCTOBER

## Homes for a Changing Region Toolkit

The Homes for a Changing Region Toolkit can help start a conversation between developers and local governments about who lives in a community and what kind of housing they need.



# We need your feedback!

**JONATHAN BURCH**

---

Principal PLANNER  
JBURCH@CMAP.ILLINOIS.GOV

All of these efforts are ongoing.

Please email us to share ideas or feedback on how we can improve our toolkits and planning approaches.

Would more specific training be helpful?

What additional resources do you want to see from CMAP?